



KCare

User Manual

Flinders Carbon Fibre and Bass Magnesium Walker

Please read the manual
carefully before using
the product.

COMPACT AND CONVENIENT

KA380CF/ KA380MG

Updated: September 2024

KCare
Healthcare Solutions

Contents

Flinders Carbon Fibre and Bass Magnesium Walker	4
Safety Precautions	7
Setup Instructions	10
Operating Instructions	16
Accessories	25
Maintenance Instructions	25
Spare Parts	27
Tested Against Standards	27
Warranty Information	27

Flinders Carbon Fibre and Bass Magnesium Walker

KA380CF

KA380MG

The Flinders Carbon Fibre and Bass Magnesium Walker is the ideal device for your day-to-day mobility needs. It can be used indoors or outdoors with its large wheels and compact frame. It is equipped with height adjustable handles and seat to suit you perfectly. The inbuilt padded seat and backrest allow for easy and immediate access to a place to sit, and when you're on the go the walker can be neatly folded to fit into your car. The walker also includes a bag for securely carrying your belongings.

Description	Flinders Carbon Fibre Walker			Bass Magnesium Walker		
Product Code	KA380CFS	KA380CFM	KA380CFL	KA380MGS	KA380MGM	KA380MGL
Seat Height	S 515mm	M 560mm	L 605mm	S 537mm	M 560mm	L 605mm
Product Net Weight without Bag & Backrest	5.7kg			6.8 kg		
Handle Height	835-990mm			835-990mm		
Overall Width	600mm			625mm		
Overall Length	685mm			685mm		
Minimum Turning Radius	750mm			750mm		
Handle Width (centre to centre)	480mm			480mm		
Seat Size	W460 x D230mm			W460 x D230mm		
Folded Dimension	L685 x W250 x H850mm			L685 x W250 x H850mm		
Wheels	8"			8"		
Bag Load Capacity	5kg			5kg		
Max User Weight	135kg			135kg		
Main Frame Material	Carbon Fibre			Magnesium Alloy		

Features

- Lightweight and high strength Carbon Fibre/ Magnesium frame
- Height adjustable handle with indication numbers
- Height adjustable seat with multiple height options and three factory presets
- Depth adjustable backrest
- Ergonomically designed handle grips
- Easily side foldable frame
- Bag under seat for storage
- Removable seat pad for easy cleaning
- Cup holder, cane clip and cane bucket as optional



Intended Use

This product is designed as a mobility aid to assist an infirm user in walking by providing a means of support for indoor and outdoor settings.

Components



Safety Precautions

Safe Use Environment

- This walker has been designed for indoor and outdoor use.
- The walker is not intended for use in muddy or wet and slippery areas such as pools or in showers.



Safety Warnings

- DO NOT exceed weight capacity of 135kg.
- DO NOT propel while seat is occupied.
- DO NOT use your walker as a wheelchair to transport someone.
- DO NOT use walker as a cart to move a heavy load.
- DO NOT stand on the seat.
- DO NOT sit on walker on an uneven surface.
- DO NOT use the walker on stairs, escalators or moving sidewalks.
- DO NOT sit on the walker whilst using public transport, like buses or trains.
- DO NOT use the walker to replace chairs such as dining room or lounge chairs. The seat has been designed as a temporary seating solution only.
- While seated, DO NOT lean forwards, backwards or sideways to reach items. This may cause a change in weight distribution and cause your walker to tip.
- DO NOT push back on backrest with your whole-body weight while seated; it is not intended to support the weight of an entire user. Backrest must be always attached when walker is in use.
- DO NOT hang bags from the handles or any other part of the walker not intended for holding bags.

- DO NOT store while the parking brake is engaged. This may damage the tires over extended periods of time.
- Make sure the walker frame is fully opened before use.
- Always engage both parking brakes before you sit.
- Always engage both parking brakes when using the walker to assist standing.
- Always engage both brakes at the same time.
- Always apply equal pressure to both handles while using walker.
- Surface temperatures can increase when exposed to external sources of heat.

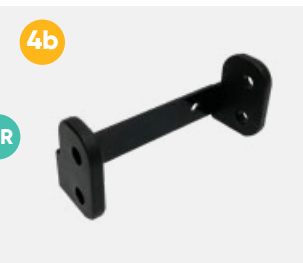
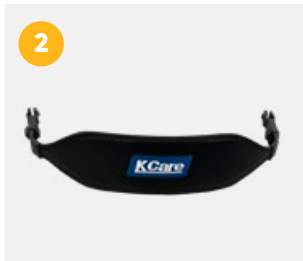
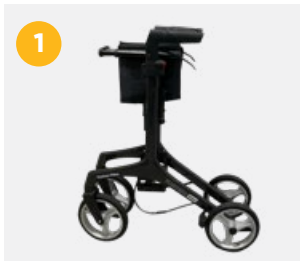
Warning: Failure to follow these instructions can lead to serious injury or result in death. Misuse of the product may void warranty.

Setup Instruction

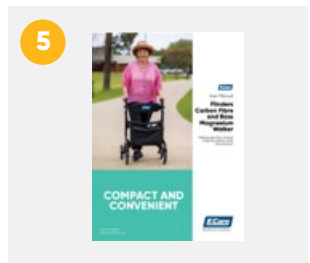
Step 1. Unpack

Carefully remove the walker and the accessories from the plastic bag and remove all protective pieces. Ensure all parts in the list are included.

No.	Description
1	Walker
2	Backrest
3	Storage bag
4a	Bracket for lower seat setting
4b	Bracket for higher seat setting
5	User manual



OR



Step 2. Unfold the walker



1: Disengage the seat clip by pulling the tab.

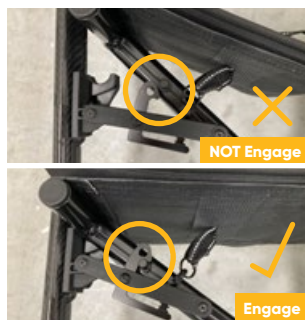


2: Pull handles outwards until walker is mostly open.



3: Press the outer sides of the seat until you hear a click, indicating it's locked.

Avoid placing your hands under the seat when pressing down.



4: Check whether the seat lock is in place.

The locking lever should be engaged with the locking pin. Refer to images.

Step 3. Adjust handles height

Refer to "Determine Correct Handle Height" on page 15.



1: Once you have determined the correct height, push both brake levers down to engage parking brake.



2: Open the height adjustment locking tab.



3: Press top of the red button and pull the handle up a little, release the button and keep moving handle up until a click is heard. Keep adjusting the handle to preferred height. Be sure a click is heard which indicates the height adjustment pin is engaged.



4: Close the height adjustment locking tab.



5: Do the same to the other handle. Ensure both handles are set to the same height (same indication number).

Step 4. Attach backrest



1: Align backrest clips with handle tubes.



2: Push each clip on the tube, ensuring they are the same height on both sides.



3: Use screw knobs to secure backrest at both sides.



4: Backrest is attached.

Reverse the above steps to remove backrest when walker is in storage or transportation. The backrest never needs to be removed when the walker is in use.

Step 5. Attach storage bag



1: Place both hooks over the bag holders, use both hands to press down the top to engage the hooks.



2: Bag is attached.



To remove bag, rotate from the inside of the hook and move up until the hook is disengaged. Do the same to disengage the other hook to remove the bag.

Operating Instructions

Unfold Walker

Refer to Step 2 in SETUP instructions.

Fold Walker

1. Engage parking brake by press down both levers.



2: Hold the handle firmly down with one hand and pull the seat strap upward with the other hand to release the seat locking mechanism.



3: Hold handle with both hands and bring handles toward each other.



4: Until the side frame is fully closed.



5: Lock the walker in folded position by engaging the seat clip.

Determine Correct Handle Height



Stand inside the walker with relaxed arms and have the top of the handles in line with the crease of your wrist – this will be the correct height. Your elbows should be slightly bent.

Walk with walker



1: Roll your walker slowly forward so that the rear wheels are a few inches ahead of your body.



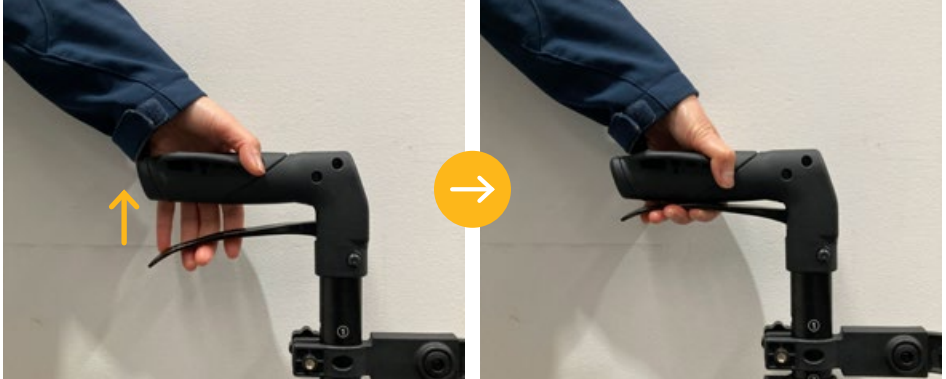
2: Step forward and place one foot in line with the rear wheels.

3: Maintaining a steady roll forward, place your other foot in line with the rear wheels.

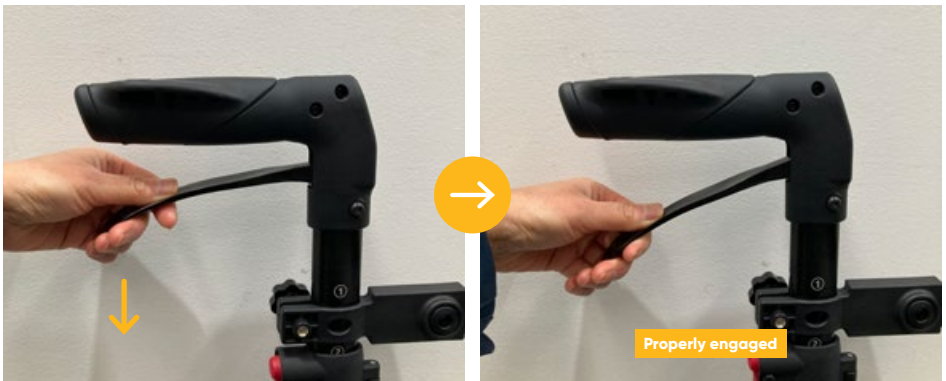
4: Determine a pace that is comfortable and allows you to place each step in line with the rear wheels.

Warning: Always engage parking brake or apply running brake when using the walker to assist standing. Refer "Use handbrake".

Use Handbrake



To engage the running brakes, squeeze both brake levers until sufficient braking force is achieved. The brake levers will return to neutral position once hand is released. Always apply equal force to both brakes simultaneously.



To engage the parking brakes, push downwards on brake lever until a “click” is heard. The lever will lock into a downward position. The click indicates brake lever is properly engaged.

To disengage parking brakes, pull up on brake lever until brake lever “pops” back into a neutral position.

Sit with Walker

1. Apply parking brakes by pushing down on the brake levers until they lock in the downward position.
2. Test the walker before sitting down to ensure that the brakes are engaged, and the walker will not roll.
3. Hold onto both handles, use the handles to stabilize your body as you turn around.
4. Before sitting, touch the back of your legs to the edge of the seat to ensure proper positioning.
5. Slowly lower your body onto the seat while maintaining constant grip of the handles.

Warning:

Always engage both parking brakes before sitting on the walker!

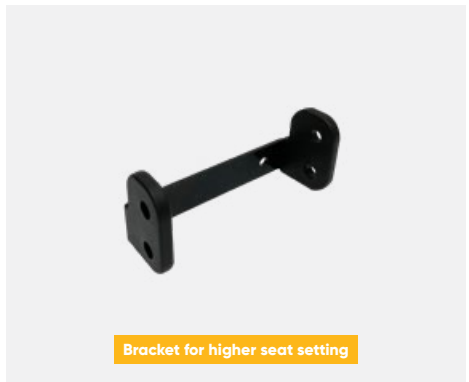
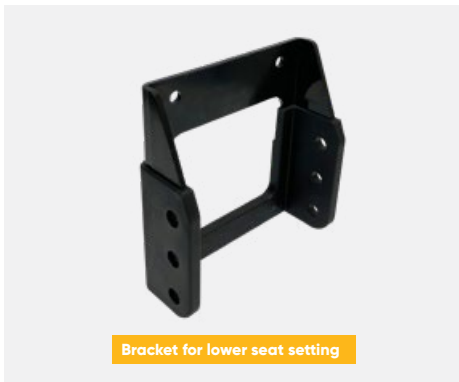
To Prevent Tipping Over when Sitting:

- Distribute weight evenly on the seat.
- DO NOT lean on one side of the walker.
- Both feet should rest flat on the ground.

Adjust Seat Height

There are three different seat height settings from the factory: small, medium and large. However, there are additional height options as indicated in table below. The seat of the Carbon Fibre walker can be adjusted to six height levels. The seat of the Magnesium walker has five height levels.

Height option	Floor To Seat Height Carbon Fibre walker	Floor To Seat Height Magnesium walker
Height 1	627mm	627mm
Height 2	605mm Large	605mm Large
Height 3	582mm	582mm
Height 4	560mm Medium	560mm Medium
Height 5	537mm	537mm Small
Height 6	515mm Small	NA



Two seat height adjustment brackets are equipped with this model. The large bracket is used for lower seat setting (Height 4,5,6). The small bracket is for higher seat setting (Height 1,2,3).

We recommend having the seat adjusted by a qualified technician. Please contact your local dealer if you wish to adjust the seat height.

Adjust Backrest Depth

Press the button on the backrest and pull out the backrest a little until it is disengaged, release button and keep pulling backrest until a click is heard to indicate the first extended position is reached. There are two extended positions. Repeat above to reach the second extended position.

Do the same to the other side of the backrest until preferred length is reached.



Use Curb Assistant

Curb Assistant is integrated at each end of the side frame. It allows users to easily tilt their rollator backward to successfully manoeuvre over curbs or bumps.

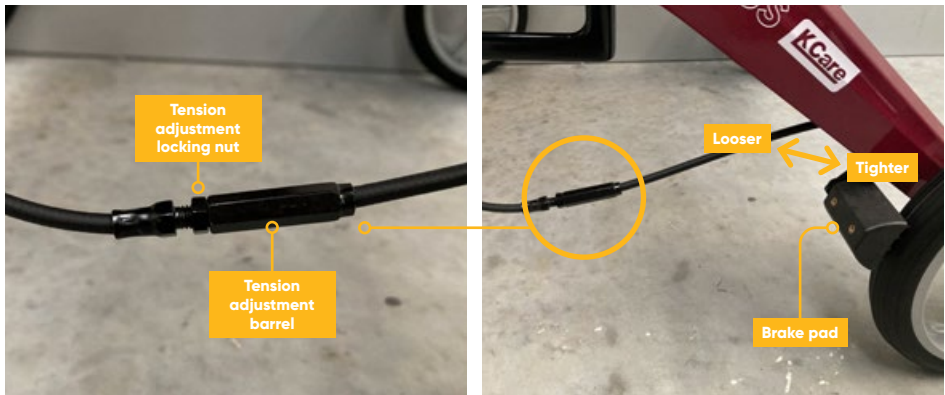


1. Hold both hands firmly on the handles, place one foot on a curb assistant and push it down.
2. Tilt the walker slightly towards you on its real wheels. Move forward until the front wheels are over the curb.
3. Step forward until the rear wheels reach the curb.
4. Lift the walker a little bit so the real wheels can go over the curb.
5. Continue walking as normal once you and your walker are on the same ground level.

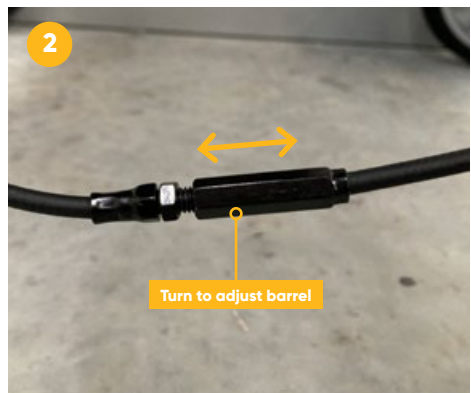
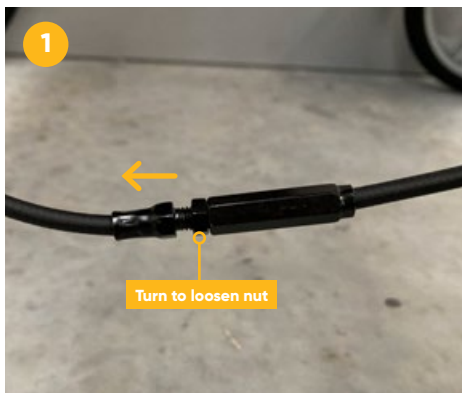
Warning: The stability of the walker changes when it is tilted, keep the walker stable before going over curbs. Do not use this function to climb high steps.

Adjust Brake tension

The braking system on your new walker has been pre-set from the factory. To maintain this pre-set position, be sure that the tension adjustment locking screw is tight against barrel (see image). If you are still having difficulty with your brakes, you can adjust the cable to make the brake pad looser or tighter.



1. Loosen the tension adjustment locking nut
2. Turn the tension adjustment barrel to make it move forward or backward, the brake pad will move with the barrel. Stop at the desired position.
3. Tighten the locking nut against the barrel.

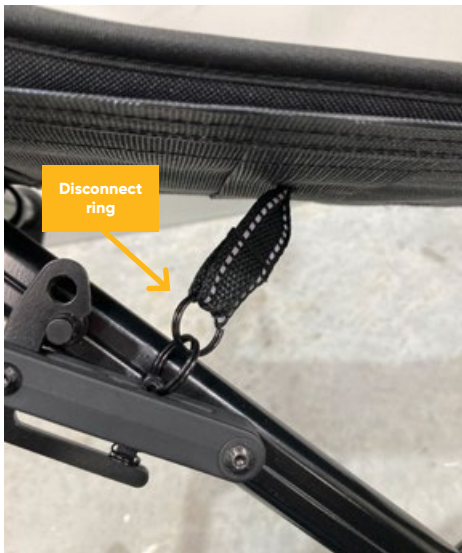


Remove Seat Pad

The seat pad can be removed for cleaning.

To remove the pad: Disconnect the ring on the seat locking mechanism under the seat, take the seat strap out and remove the pad.

To attach the seat pad: Place the seat pad on mesh seat and secure with Velcro, put the strap back in and connect the ring to the locking mechanism.



Accessories

Accessories available including cup holder, cane clip, and cane bucket. Contact dealer for more information.

Maintenance Instructions

Routine Inspections

- Check the brakes are working correctly before each use.
- Ensure height adjustment pins/buttons and locking tabs, castors, or any other moving objects are in good working order before operating.
- Periodically check screws and fasteners are properly tightened.
- Periodically check push buttons on backrest to make sure they are engaged.
- Periodically check screw knob on backrest to make sure they are tightened.

Cleaning

- All surfaces may be cleaned with a damp cloth and neutral detergent.
- Foam seat pad and storage bag can be handwashed in warm water with mild soap. Do not use washing machine to spin dry. Do not tumble dry. Dry in shade only. Do not dry clean. Do not bleach. Do not iron. Ensure they are completely dry before use.
- Handle grips may be disinfected with commercial disinfectants or wipes.
- DO NOT use harsh chemicals on any of the walker's surfaces.
- DO NOT use high pressure cleaner for cleaning.

Storage and transportation

- The product must be dry before storage.
- Keep the product in dry environment when storage or transporting.
- The product must be packaged for transportation to avoid damage.
- Remove all accessories before long term storage or transport.

Servicing and repairs

- If you find that your product needs servicing or repair, please contact your dealer for further instructions.
- K Care recommends a 6-month preventative maintenance service. Please contact your local dealer to arrange a service programme. Always provide the information from the Product Label to your dealer when requesting service or repairs.

KA380CF
Flinders Carbon Fibre Walker



9343062038385

Serial No: 00001
Manufactured: 08/2024



KCare
Healthcare Solutions
12 Dream Haven Court
Epping, VIC, 3076
KCare.com.au

Max. Width: 600 mm
Designed for Indoor and Outdoor Use

Disposal Instruction

- Please dispose of thoughtfully according to local government regulations.

Spare Parts

- Backrest
- Seat pad
- Storage bag
- Castors
- Brake cables

Tested Against Standards

- Both walkers have been tested to ISO 11199-2:2021 Assistive products for walking manipulated by both arms Part 2: Rollators.

Warranty Information

Warranty for this product falls within K Care standard warranty services. Please see www.kcare.com.au for further warranty information.

Improving your life everyday™

At Your Service

Sales, administration
and general enquiries

National 1300 783 783

Your Customer Service Team
customerservice@kcare.com.au

kcare.com.au

All information is considered to be true and correct at the date of publication. Changes in circumstances after the time of publication may impact on the accuracy of the information.

